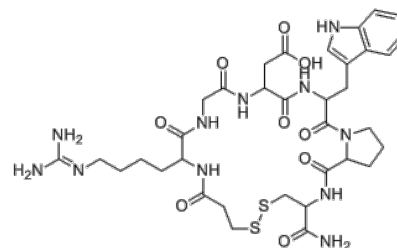


**Product Name** : Eptifibatide  
**Cat. No.** : PC-73151  
**CAS No.** : 188627-80-7  
**Molecular Formula** : C<sub>35</sub>H<sub>49</sub>N<sub>11</sub>O<sub>9</sub>S<sub>2</sub>  
**Molecular Weight** : 832.0  
**Target** : Other Targets  
**Solubility** : 10 mM in DMSO



## Biological Activity

Eptifibatide (Integrilin) is a synthetic homodetic cyclic peptide, inhibits platelet aggregation by selectively blocking the platelet **glycoprotein IIb/IIIa** receptor.

Eptifibatide prevents the binding of fibrinogen, von Willebrand factor, and other adhesive ligands to platelet glycoprotein IIb/IIIa receptor.

Eptifibatide has a role as a platelet aggregation inhibitor and an anticoagulant.

Eptifibatide also binds to SARS-CoV-2 binding motifs of ACE2 receptor.

## References

Furman MI, et al. *J Am Coll Cardiol*. 2004 Jun 16;43(12):2319-25.

Shweta Choudhary, et al. *Front Immunol*. 2020 Jul 10;11:1664.

**Caution: Product has not been fully validated for medical applications. Lab Use Only!**

E-mail: tech@probechem.com